

NOW WHAT?

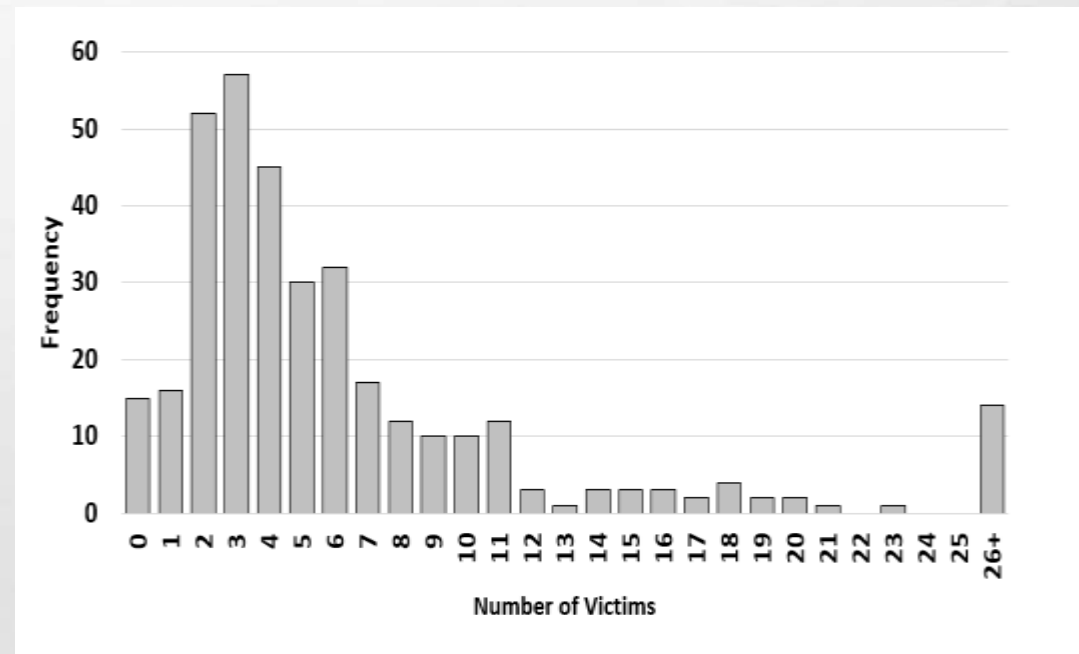
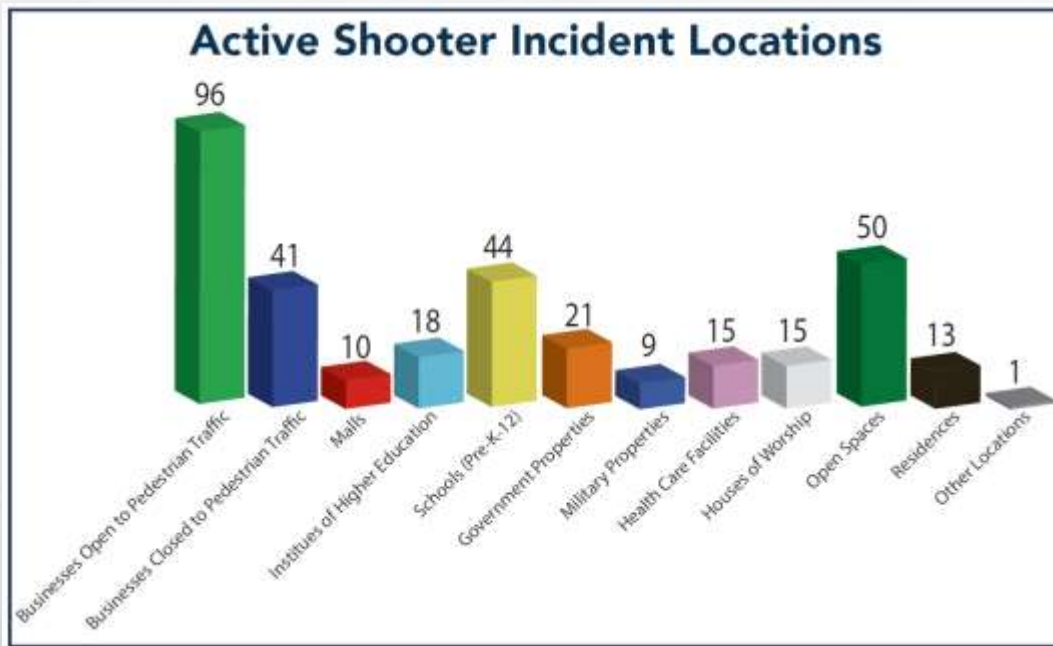
RECOVERY STRATEGIES FOR ACTIVE VIOLENCE INCIDENTS







AND THE DATA SAYS.....



SCOPE OF THE PROBLEM



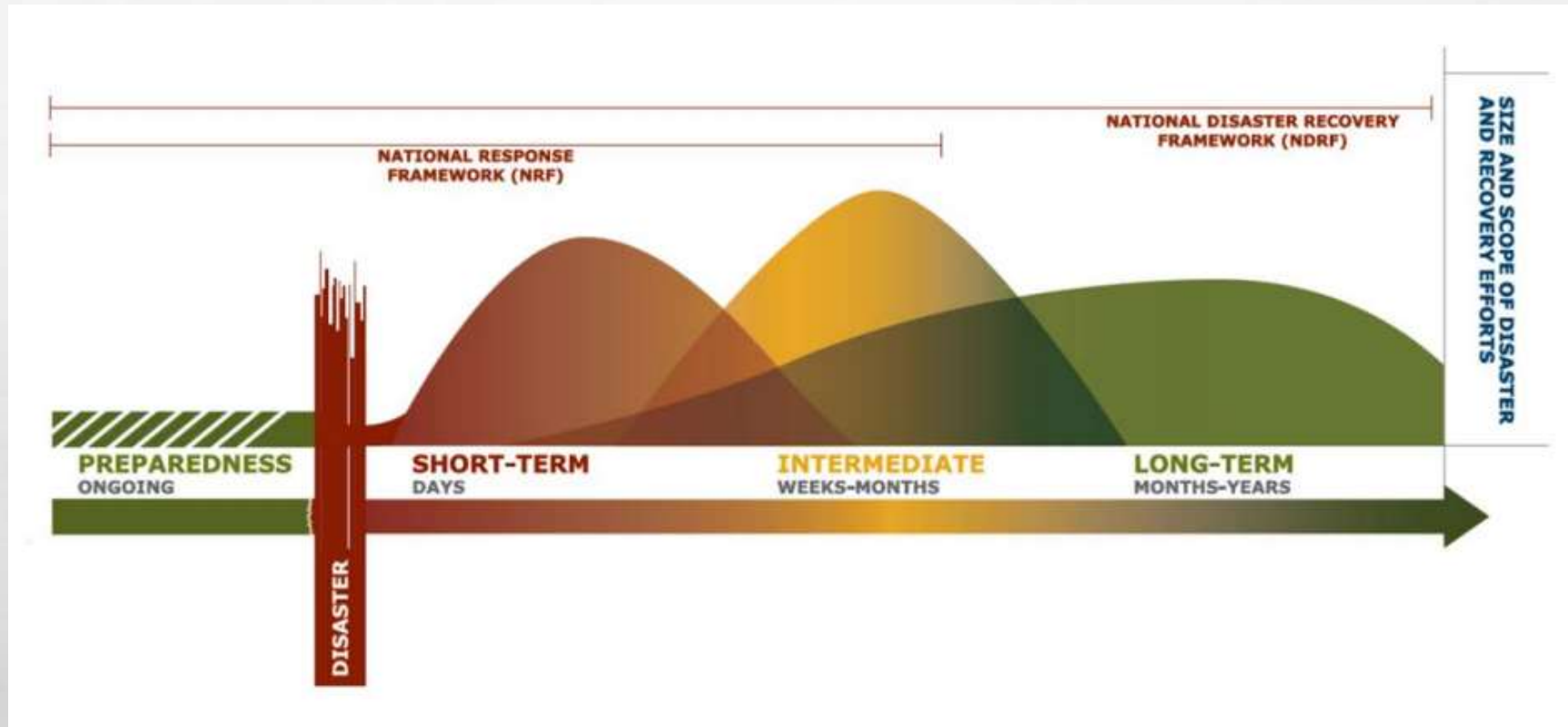
RECOVERY DEFINED

RECOVERY

- **ADDRESSING IMMEDIATE COMMUNITY NEEDS**
- **REESTABLISHING ESSENTIAL SERVICES**
- **RESTORATION TO A MORE RESILIENT COMMUNITY**
- **BUILD IT BETTER**

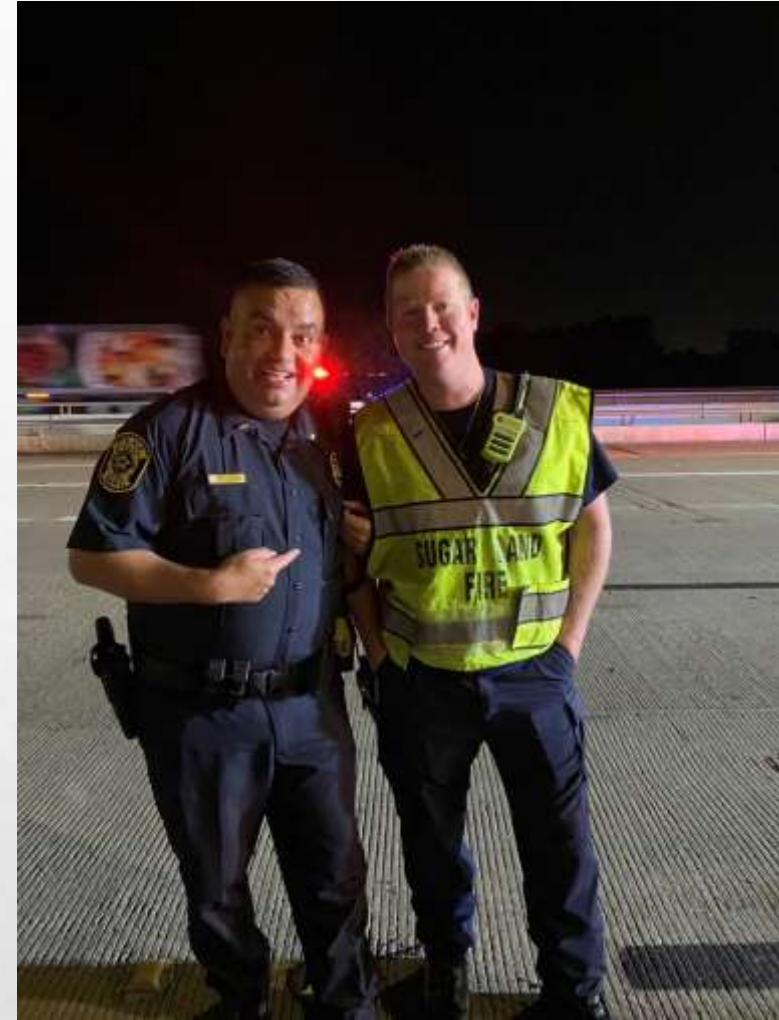


RECOVERY CONTINUUM



GUIDING PRINCIPLES

- **INDIVIDUAL AND FAMILY EMPOWERMENT**
- **LEADERSHIP AND LOCAL PRIMACY**
- **PRE-DISASTER RECOVERY PLANNING**
- **ENGAGED PARTNERSHIPS AND INCLUSIVENESS**



GUIDING PRINCIPLES

- **UNITY OF EFFORT**
- **TIMELINESS AND FLEXIBILITY**
- **RESILIENCE AND SUSTAINABILITY**
- **PSYCHOLOGICAL EMOTIONAL RECOVERY**

STRATEGIES

STRATEGIES

- **PRIORITIZING LINES OF EFFORT**
- **TASK ORGANIZATION**
- **COMMUNICATION**

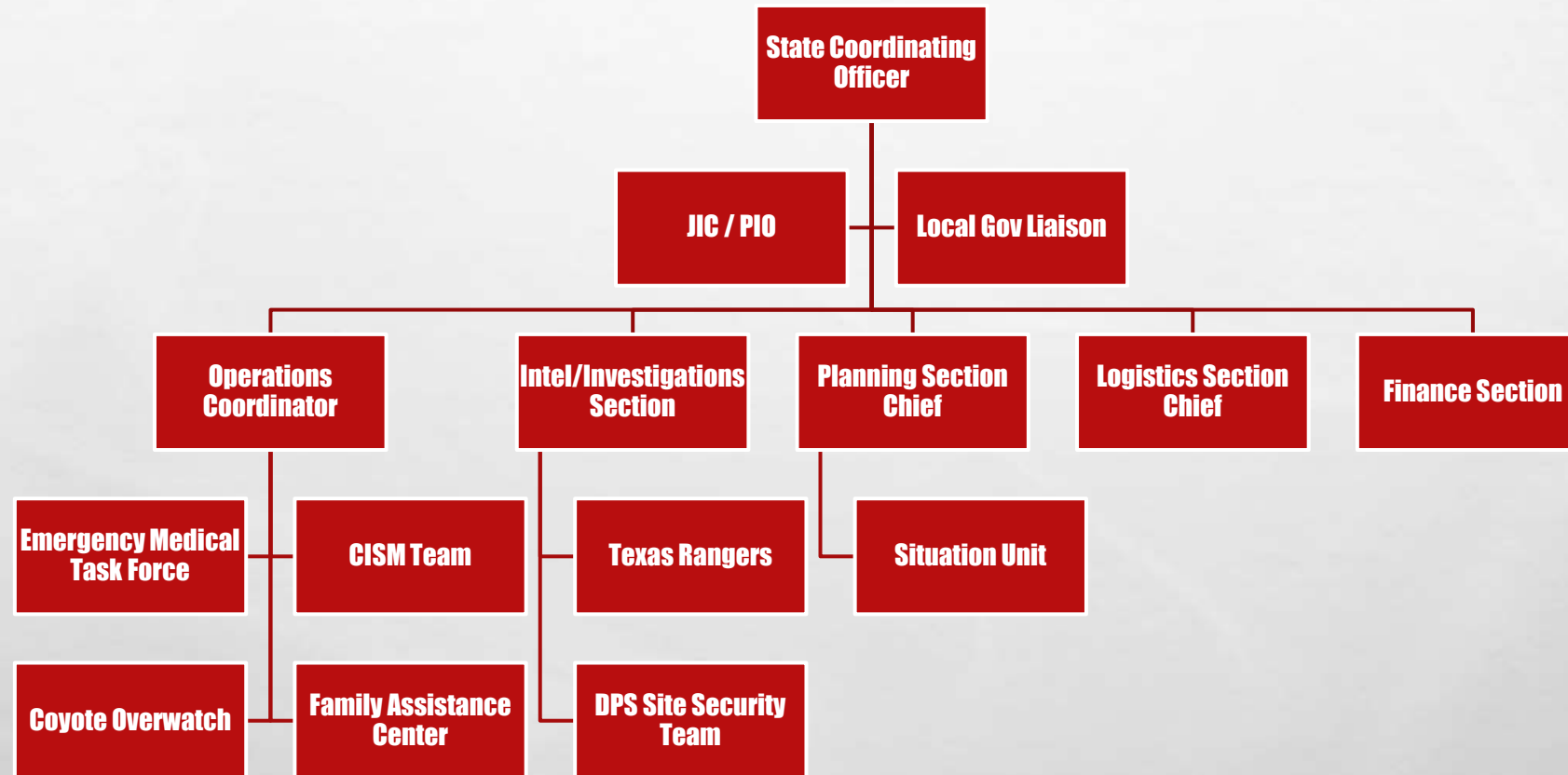
LINES OF EFFORT

- **COMMUNITY ASSESSMENT**
 - **WHAT'S GOING ON? WHAT ARE YOU TRYING TO DO? HOW CAN WE HELP?**
- **RESTORATION OF SERVICES**
 - **WHAT NORMAL SERVICES ARE DISRUPTED?**
- **SUPPORTING COMMUNITY NEEDS**
 - **IMMEDIATE CONCERNS REQUIRING OUR ATTENTION**
- **SHAPING THE FUTURE COMMUNITY**
 - **WHERE DO WE WANT TO GO?**

RECOVERY SUPPORT FUNCTIONS

- **COMMUNITY PLANNING AND CAPACITY BUILDING**
- **ECONOMIC RECOVERY**
- **HEALTH AND SOCIAL SERVICES**
- **HOUSING**
- **INFRASTRUCTURE SYSTEMS**
- **NATURAL AND CULTURAL RESOURCES**

TASK ORGANIZATION – SHORT



TASK ORGANIZATION – INTER/LONG



COMMUNICATION



TOOLS

TOOLS

- **CENTERS**
- **CRITICAL INCIDENT STRESS MANAGEMENT (CISM) TEAMS**
- **EMERGENCY MEDICAL TASK FORCES (EMTF)**
- **RN TASK FORCES (RNTF)**
- **ALL HAZARDS INCIDENT MANAGEMENT TEAMS (AHIMT)**
- **PRE DISASTER RECOVERY PLANS**

THE CENTERS

- **REUNIFICATION CENTER**
- **FAMILY ASSISTANCE CENTER**
- **RESILIENCY CENTER**



FAC VS RESILIENCY



UVALDE, TX

FAMILY ASSISTANCE CENTER
LOCATION:
Uvalde County Fairplex
215 Veterans Lane
Uvalde, TX 78801

HOURS OF OPERATION:
EXTENDED THROUGH FRIDAY, JUNE 3
Thursday, May 26: 9 a.m. - 5 p.m.
Friday, May 27: 9 a.m. - 5 p.m.
Saturday, May 28: 9 a.m. - 5 p.m.
Sunday, May 29: 9 a.m. - 5 p.m.
Monday, May 30: 9 a.m. - 5 p.m.
Tuesday, May 31: 9 a.m. - 5 p.m.
Wednesday, June 1: 9 a.m. - 5 p.m.
Thursday, June 2: 9 a.m. - 5 p.m.
Friday, June 3: 9 a.m. - 5 p.m.

Federal, state, local and community agencies have opened the Family Assistance Center (FAC) at the Uvalde County Fairplex to address the immediate needs and provide information, support and resources to those directly affected by the Robb Elementary School Tragedy. Services will be available to family members of the deceased, those suffering physical and emotional injuries, Robb Elementary School faculty, staff, students, and others directly impacted by this tragedy.

Services available include:

- CRIME VICTIM SERVICES
- CONSULATE SERVICES
- DEATH BENEFITS
- COUNSELING/SPIRITUAL CARE
- FUNERAL SERVICES
- CHILD CARE AND FAMILY SERVICES
- TRANSPORTATION
- LANGUAGE TRANSLATION



Resources Available To The Uvalde Community At The Uvalde Together Resiliency Center

Mental Health Resources

- 800-490-0799 - a 24/7 hotline offering mental health assistance to everyone in the community
- Connect callers with mental health services, counseling, medication, tele-psychiatry/tele-counseling
- On-site general behavioral health support, including crisis intervention

Educational Support

- Trauma-informed crisis support for summer school students, provided at the summer school
- Mental health professionals will work alongside academic leaders, district counselors, and summer school teachers to provide psychological first aid to UCISD students, families and staff at five campuses
- Two 30-minute sessions per week for each student dealing with grief and trauma
- Students not enrolled in summer school can go to Benson Center for counseling this summer

Insurance Claims

- Information about workers' compensation and health care claims

Workers at the Uvalde Together Resiliency Center can refer individuals to local offices and state agencies

Support with unemployment insurance

- Help for businesses needing assistance with workers' compensation
- State and school employee assistance with additional benefits and reduced out-of-pocket expenses

Childcare Services For Impacted Families and First Responders

- Childcare services for families of victims, anyone associated with Robb Elementary, and first responders

Extended benefits, relaxed requirements, and created new childcare services

Extended childcare financial assistance eligibility

Health Care

- Texas Health and Human Services Commission eligibility works available for benefits assistance

General Expenses

- Lodging assistance for extended families of those impacted
 - Home and rental assistance
 - Utility assistance
 - Assistance with SNAP benefits
 - Grocery and gas cards

24/7 Hotline Offering Mental Health Assistance: 800-490-0799

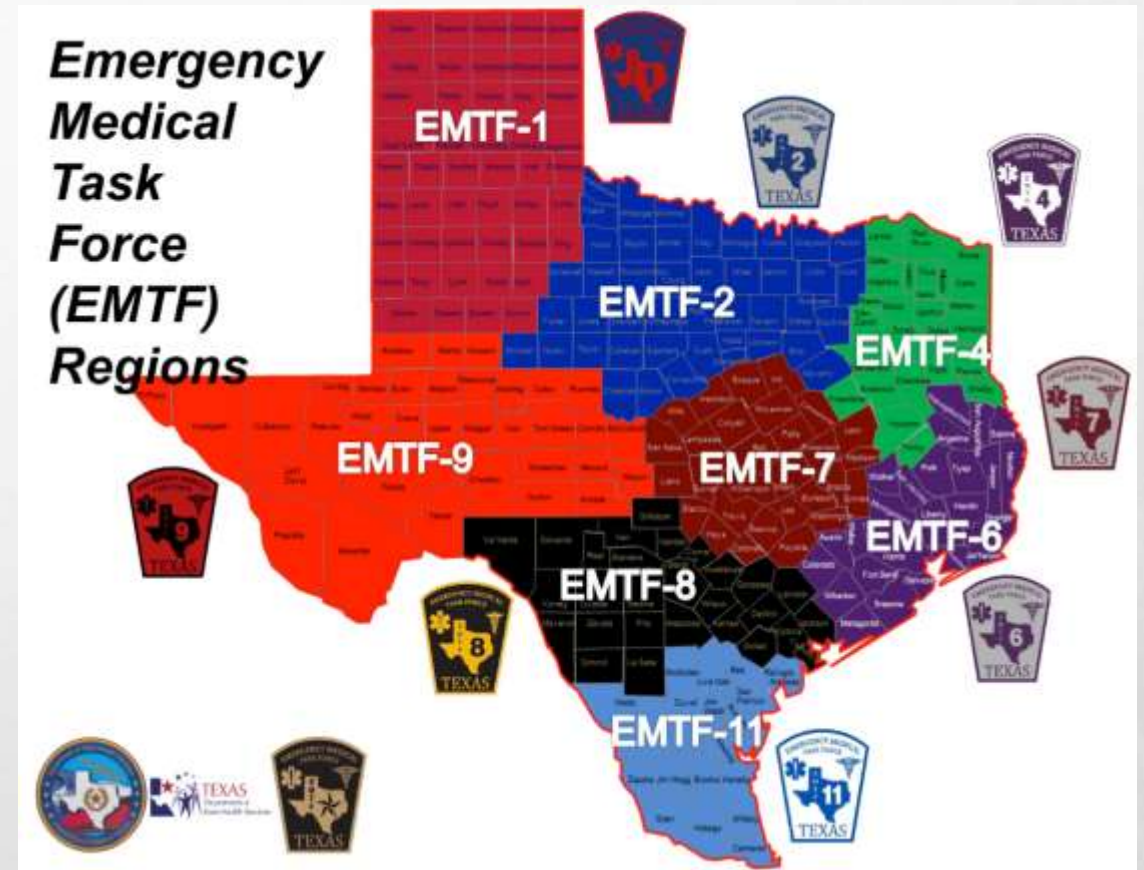
CISM TEAMS

- **CRITICAL INCIDENT BRIEFING**
- **PEER SUPPORT**
- **CRITICAL INCIDENT DEFUSING**
- **CRITICAL INCIDENT DEBRIEFING**



EMTF / RNTF

- **ADDITIONAL RESOURCES WHEN YOU NEED IT MOST**
- **DECOMPRESS LOCAL RESOURCES**
- **ACTIVATION**
 - **STATEWIDE MUTUAL AID**
 - **EMAC**



ALL HAZARDS IMT

- **NATIONAL PROGRAM**
 - **BROAD KNOWLEDGE BASE**
 - **TASK PURPOSE BUILT WITH SPECIFIC EXPERTISE**
 - **BLENDED FOR A REASON**
 - **DELEGATION OF AUTHORITY OR LETTER OF EXPECTATIONS**
- **EMPLOYMENT MODELS**
 - **SUPPLEMENT EXISTING STRUCTURE**
 - **CARVE OUT A MISSION**



PRE-DISASTER RECOVERY PLAN

**“IN PREPARING FOR BATTLE I HAVE ALWAYS
FOUND THAT PLANS ARE USELESS, BUT
PLANNING IS INDISPENSABLE”**

- DWIGHT D. EISENHOWER

KEY TAKE AWAYS

- **MINDSET = THIS WILL HAPPEN**
- **WE HAVE THE ABILITY TO RECOVERY**
- **PARTNERSHIPS, RELATIONSHIPS, AND A SHARED VISION WILL WIN THE DAY**
- **PREPARE NOW SO TOMORROW WILL BE EASIER**

QUESTIONS?

