



Texas LODD Task Force

www.texasloddtaskforce.com

Texas LODD Task Force

- Created in 1999 to support injured firefighters. Today the organization serves law enforcement, EMS, fire service, search and rescue services, and 911 telecommunicators.
- In 2000 the organization started primarily caring for the departments and families of the fallen. Today we also serve agencies and loved ones impacted by catastrophic injuries, those who have died by cancer or suicide, and those seeking assistance and resources for mental health services.
- Assisted the NFFF in 2006 with the development of LAST.
- 501(c)(3) non-profit corporation – all funding is received from private donations from caring individuals, organizations, corporations and foundations.





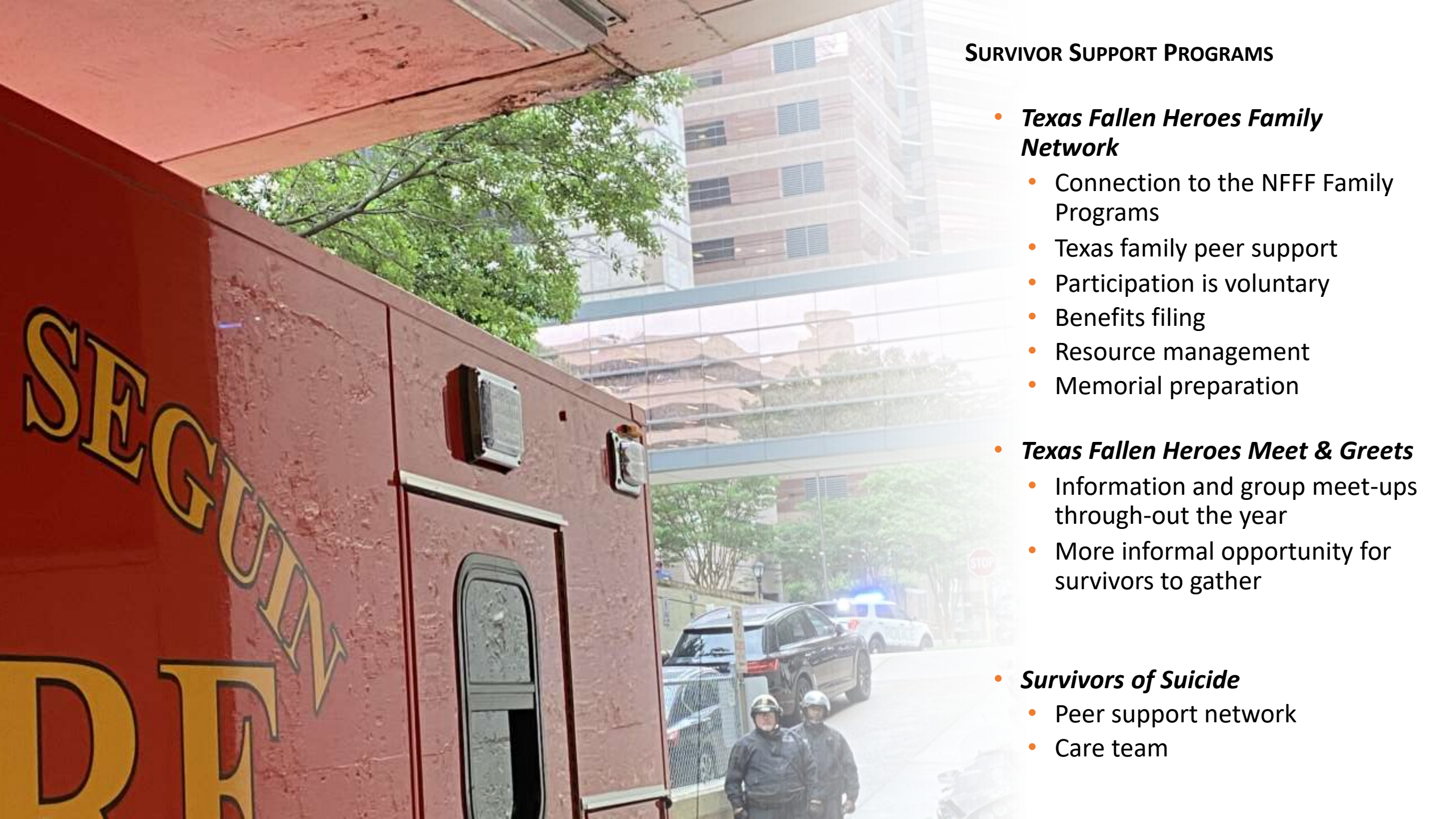
Texas LODD Task Force

The Texas LODD Task Force provides assistance, consulting and education to all fire, police, and EMS agencies whether union, private, government, industrial or volunteer. Our team is made up of emergency services professionals of all ranks who volunteer their time to this important cause. The Task Force is funded through the donations and grants given by private citizens, organizations, and corporations and works under the 501 (c) 3 IRS designation.



MISSION STATEMENT

The **Texas LODD Task Force** honors fallen (LODD, Medical, Suicide) and critically injured first responders by providing at-need response, resources, and remembrance programs to and for first responder agencies and their loved ones.



SURVIVOR SUPPORT PROGRAMS

- ***Texas Fallen Heroes Family Network***
 - Connection to the NFFF Family Programs
 - Texas family peer support
 - Participation is voluntary
 - Benefits filing
 - Resource management
 - Memorial preparation
- ***Texas Fallen Heroes Meet & Greet***
 - Information and group meet-ups through-out the year
 - More informal opportunity for survivors to gather
- ***Survivors of Suicide***
 - Peer support network
 - Care team



FIRST RESPONDER SERVICE PROGRAMS

- ***Funeral/Memorial Preparation***
 - Response Team
 - Chaplaincy Through the Texas Corps of Fire Chaplains
- ***Education***
 - Prepares Departments for Line-of-Duty Death or Serious Injury
 - Pre-incident planning, survivor notification, family and co-worker support and benefits / resources available to families
- ***Texas Honor Guard Society***
 - Support, Networking & Education for honor guard teams
 - Support to State, Regional, and Local Commanders that volunteer for the Task Force
- ***Partner Programs***
 - One on one support for partner organizations after LODD, Injury or suicide occurs
- ***Other Programs***
 - Response to catastrophic on-duty injury
 - Peer support to the injured
 - Advocacy
 - Resource procurement
 - Mass casualty/fatality response



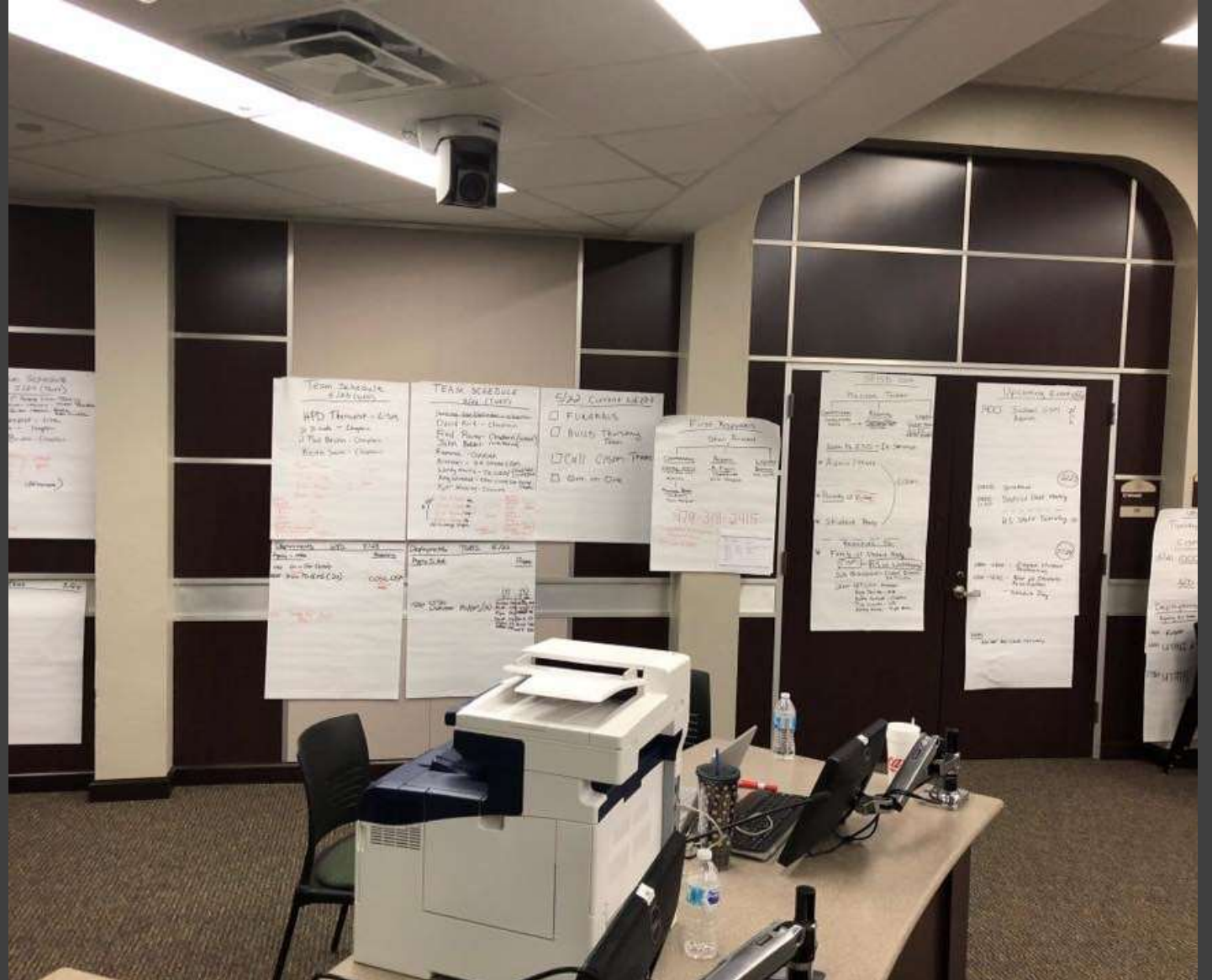
Disaster Behavioral Health

FIRST RESPONDER
BEHAVIORAL HEALTH
RESPONSE

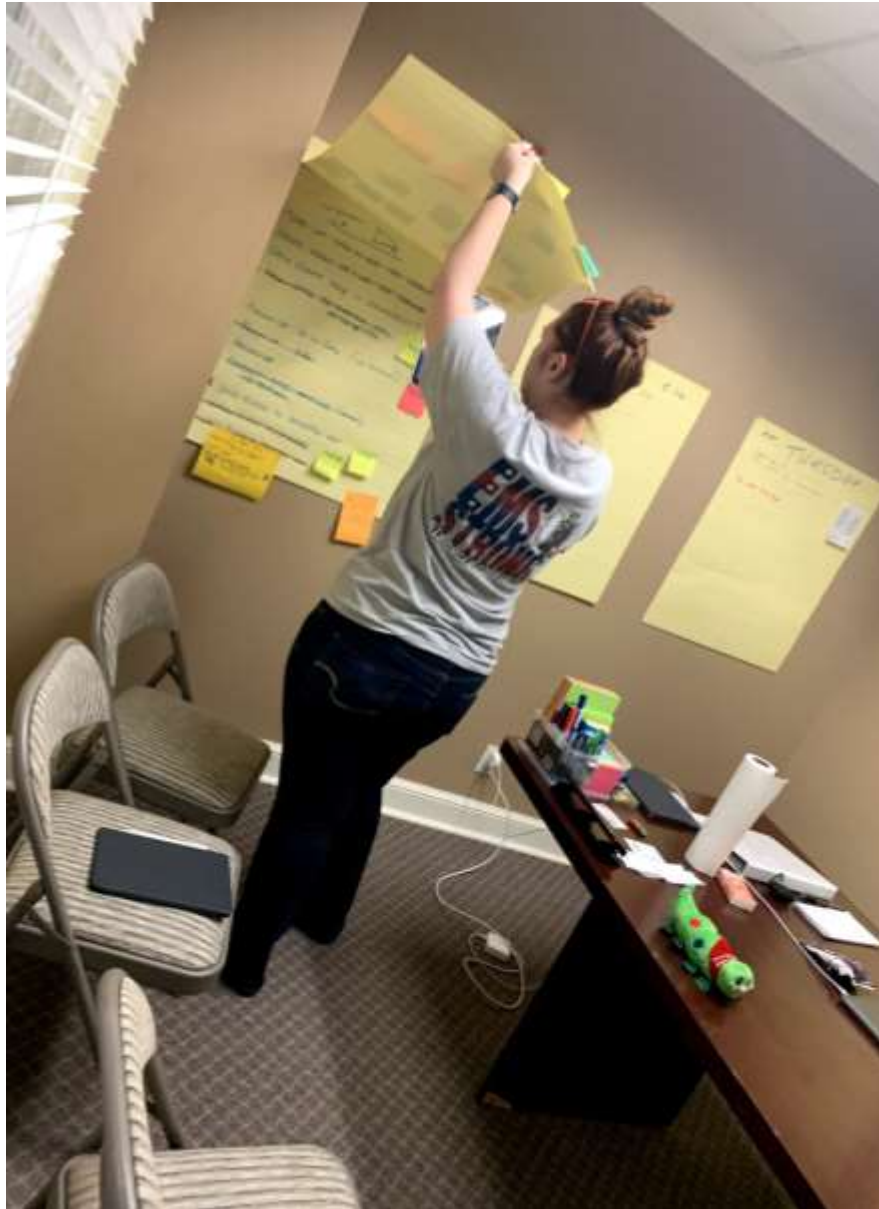
Response History



WEST EXPLOSION



SANTA FE



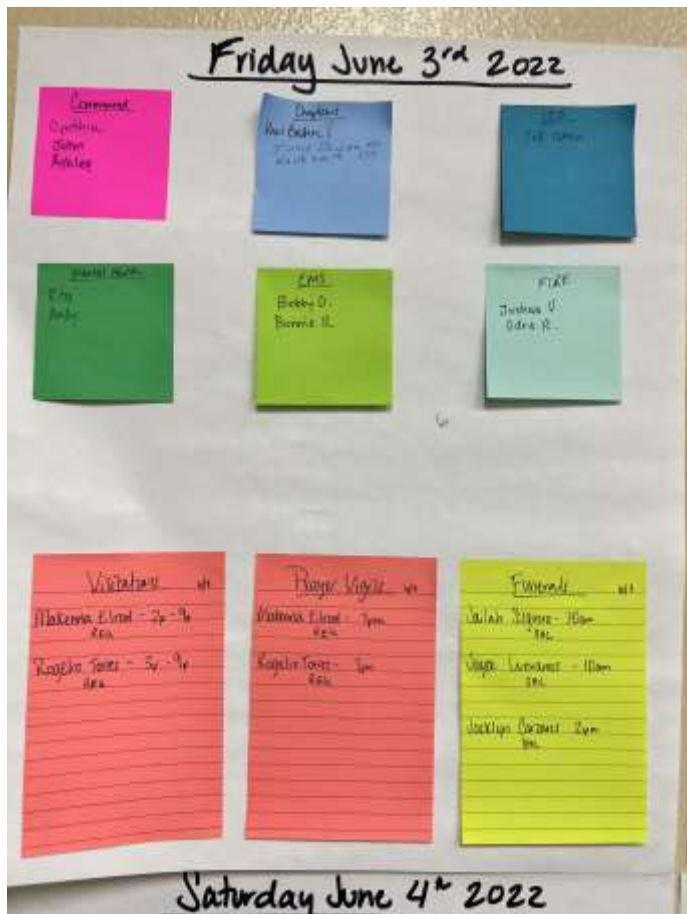
EL PASO

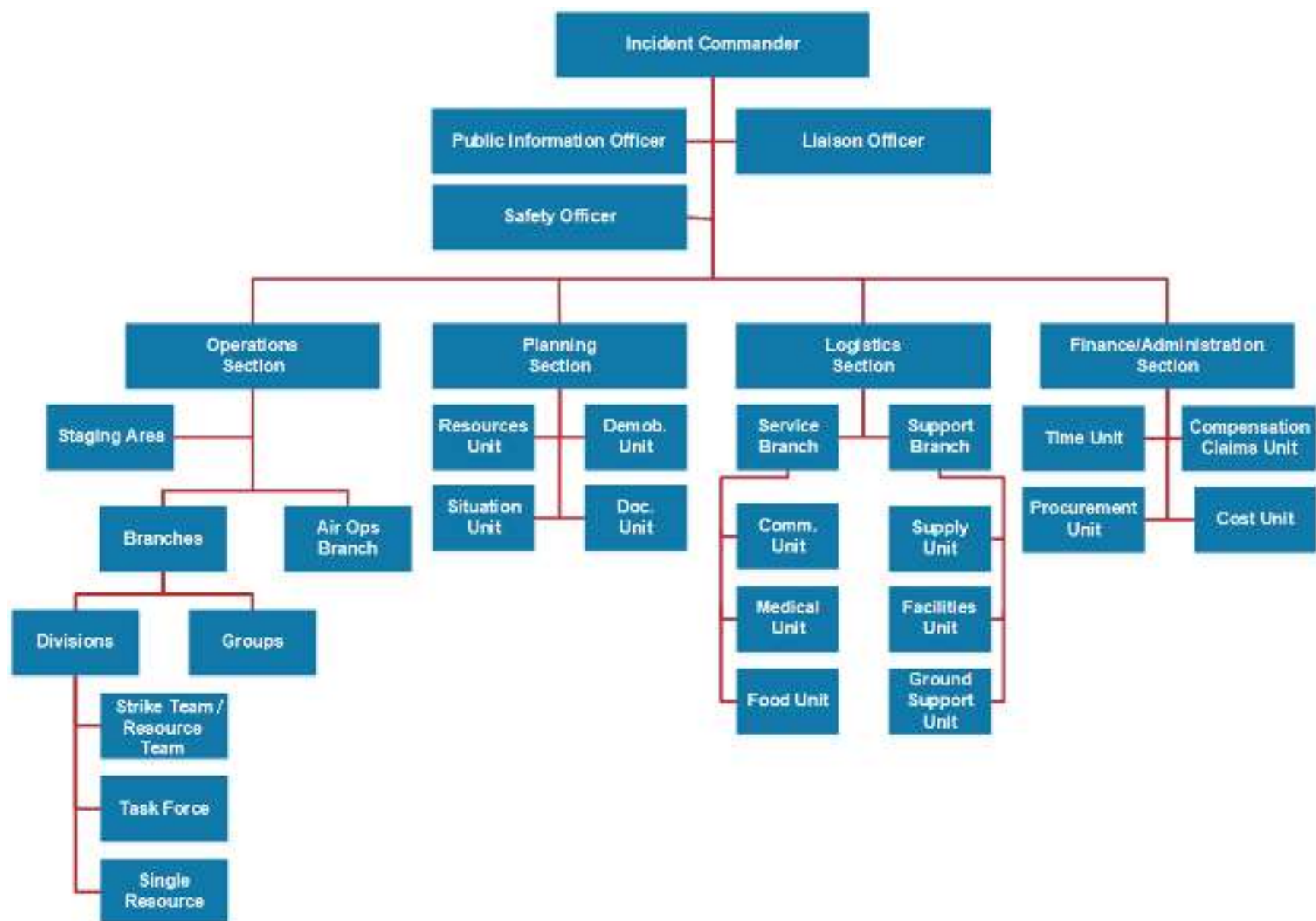


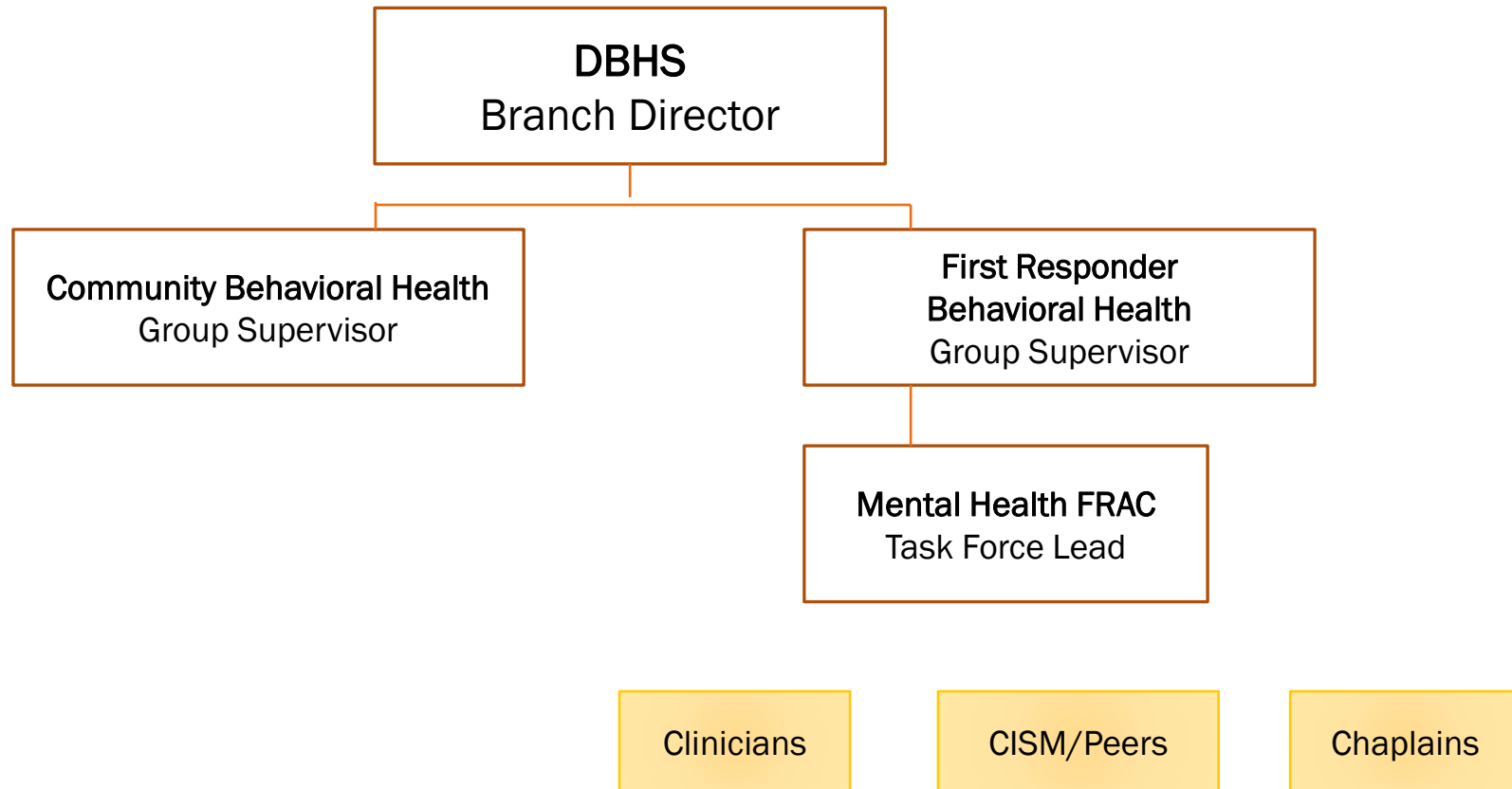
UVALDE

Management of Behavioral Health Response











DBHS

FIRST RESPONDER
WORKING GROUPS

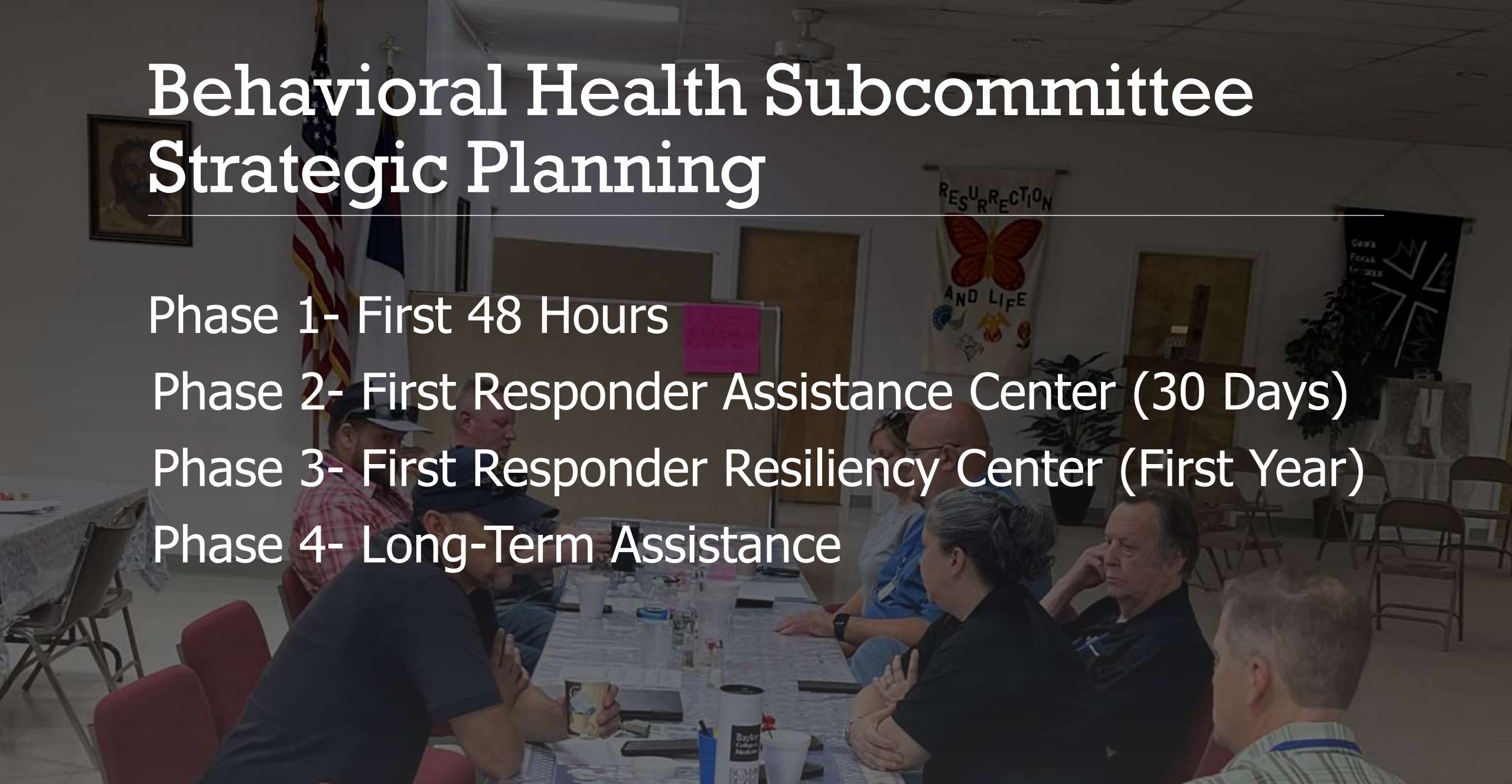
Behavioral Health Subcommittee Strategic Planning

Phase 1- First 48 Hours

Phase 2- First Responder Assistance Center (30 Days)

Phase 3- First Responder Resiliency Center (First Year)

Phase 4- Long-Term Assistance



Considerations

- Peer Support /PFA
- CISD
- Chaplaincy
- Clinicians – EMDR Trained or Not?
- Qualifications/Experience
- Who Fits in Which Phase?
- Support organizations, universities, etc.





ICS Subcommittee Strategic Planning

- **Big Picture- 10,000 Foot View-** Review of the system(s) as a whole
- **5,000 Foot View-** Breaking the systems/structure down and making them work for responses,
- **Ground Level View-** Details such documentation, support programs (Google, Smart Sheets, etc), personnel
- **Implementing the program;** how to partner with TDEM for future responses; creating SOGs; what does this plan look like for various types of responses
- **Training**

Considerations

- Incident Complex – See page 3.9
- Division of a Single Incident
- Branch Tactical Planning-
See Pages 3.13 – 3.15





CONTACT US

Wendy Norris, CEO

832-647-6770

wendy@texasloddtaskforce.com

www.texasloddtaskforce.com